

Hydraconn JU

Our Hydraconn union is a rugged connector that permits the coiled tubing injector assembly and stripper packer to be stabbed and latched onto the top of the coiled tubing BOPs, creating a funnel to guide the stabbing operation. It has a tapered seal bore which allows the connector to mate even when the injector is suspended at a slight angle. The Hydraconn is operated by a single hydraulic line that opens a series of latching dogs on the BOP-mounted connector half to accept the stinger sub-mounted on the bottom of the stripper packer. Once the two parts are stabbed together, the hydraulic pressure is vented and the spring-loaded system forces the latch dogs closed, locking the Hydraconn together.

Features

- Constructed to provide a safe and reliable connection in a compact, rugged design
- Incorporates a tapered seal bore that facilitates stabbing the connection
- Hydraulic open safety latch with a manual override and an indicator included to prevent an unintentional release while operating with well pressure in the stack
- Safety quick latch between the stripper packer and the injector head
- Hydraulic pressure to latch and unlatch; no pressure required to hold in place
- Designed to latch the injector to the pressure control stack without the need for personnel standing underneath the injector

Specifications: Hydraconn

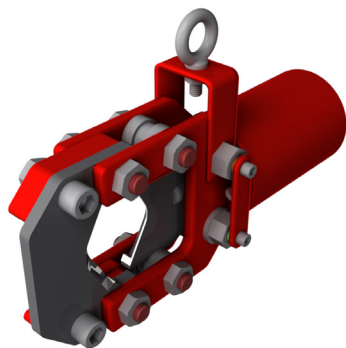
Model	Bore	Working Pressure	Weight	Height	Width
JU34	3.06"	10,000 psi	900 lbs.	21.67"	12.75"
JU36	3.06"	15,000 psi	1,200 lbs.	25.88"	17.75"
JU44	4.06"	10,000 psi	1,120 lbs.	25.11"	17.75"
JU46	4.06"	15,000 psi	1,200 lbs.	25.86"	17.75"
JU54	5.12"	10,000 psi	600 lbs.	27.77"	17.62"
JU74	7.06"	10,000 psi	4,000 lbs.	31.75"	27.12"

Injector Connector JIC

The Injector Connector is the safety quick latch between the stripper packer and the injector head. This is made possible by a male flange that stays connected to the stripper and latches when it is inserted through the injector connector. The quick latch uses the same latching dogs design as the Hydraconn quick latch.

Features

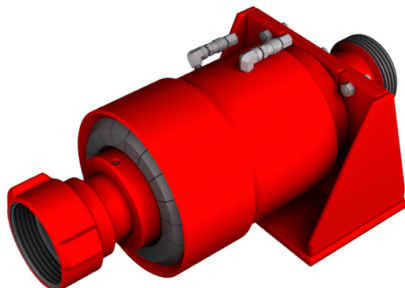
- Hydraulic pressure to latch and unlatch; no pressure required to hold in place
- Designed to latch the injector to the pressure
- Control stack without the need for personnel standing underneath the injector
- Available in 3.06" and 4.06" sizes for manual and hydraulic applications



Tubing Cutter



Flow Cross



Quick Disconnect

Tubing Cutter

In response to the needs of the coiled tubing industry, we have developed a line of tubing cutters for use in a variety of applications.

- Three models are currently available for shearing up to 3.50" OD tubing
- Hydraulically operated cutter comes in a configuration as light as 42 lbs. for easy handling
- Generates over 60,000 lbs. of force
- Requires only one hydraulic hose connection
- Air spring return for blades

Flow Cross

We offer flow crosses from 2.56" to 7.06" with 2.06", 3.06" or 4.06" side outlets. Flow crosses can be manufactured to any desired length or the shortest standard length possible.

Quick Disconnect

We offer Quick Disconnects that range in size from 2.56" to 4.06". The disconnects are based the same locking dog principle as the Hydraconn and Injector connector quick latches. They are predominantly used with coflexit hoses, which are designed to disconnect in the event of an emergency.

Additional Accessories

- Adapter Flange
 - API 6A flange x Quick Union Box (Bowen, TOT or API Connections)
 - API 6A flange x Quick Union Pin (TOT, Bowen or API connections)
- Quick Union (Hand Union) x industry standard connection
- Adapter spools for different sizes or working pressure combinations
- Flow Tee for taking returns or pumping down the well
- Flow Cross for taking returns or pumping down the well
- Lubricator Quick union connections in various lengths from 2' to 12'
- Risers API flanged end connections in various lengths from 2' to 12'

All items are available in applicable bore sizes and working pressures.